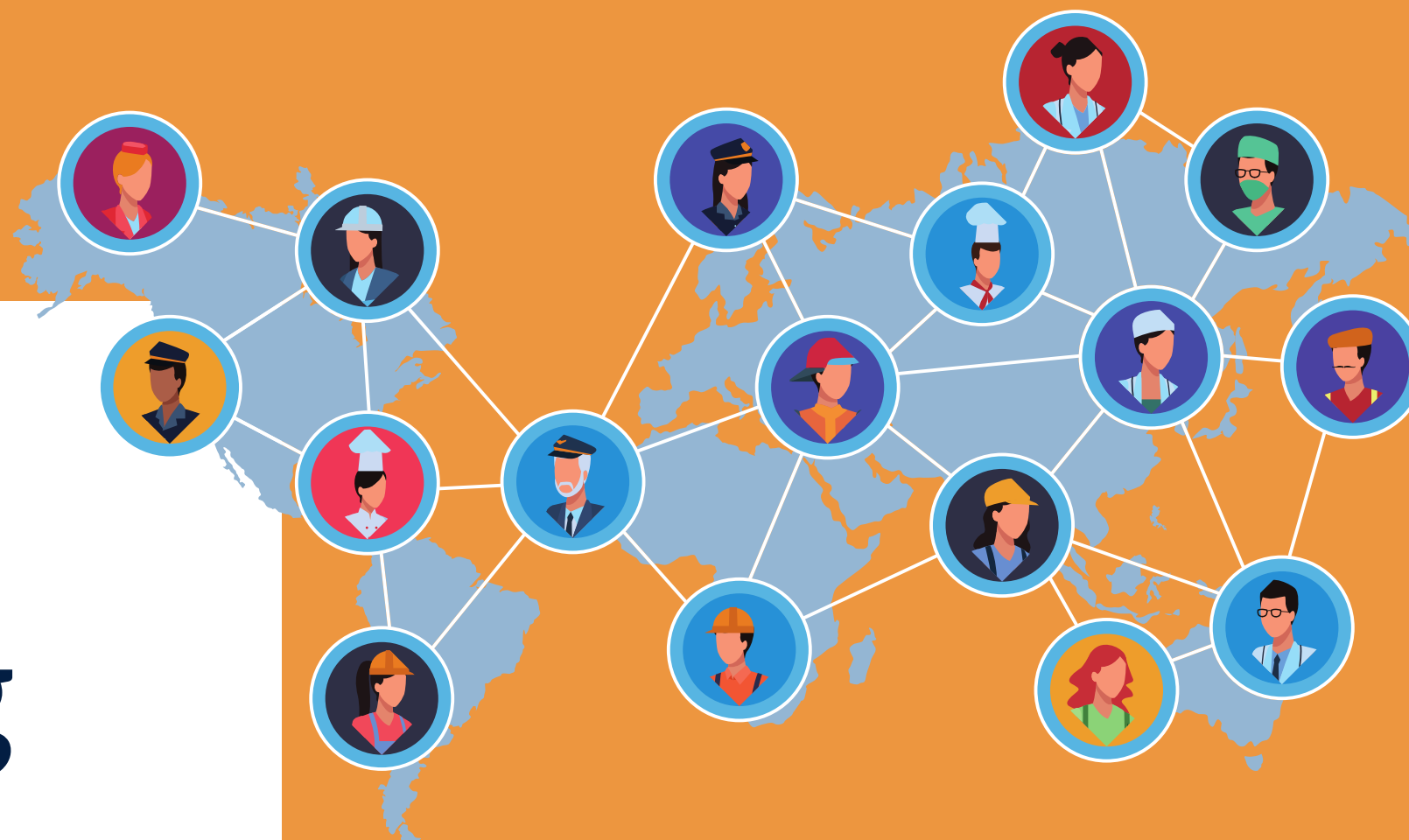


Careers and work-related learning

7th April – 2nd May 2025



A world map with a light blue background and orange landmasses. Overlaid on the map is a network of 15 circular icons, each containing a stylized illustration of a person in a specific profession. The icons are connected by white lines, forming a global network. The professions represented include: a chef, a pilot, a nurse, a construction worker, a police officer, a chef, a scientist, a teacher, a doctor, a chef, a construction worker, a pilot, a chef, a construction worker, and a doctor. The icons are distributed across the map, with a higher concentration in the Americas and Europe.



**CHEL TENHAM
BOURN SIDE
SCHOOL**

“Inspiring lives through learning



Gloucestershire Constabulary

Our police officer recruitment is open!

[Police officer | Gloucestershire Constabulary](#)

Do you have what it takes to help change lives and keep Gloucestershire safe?

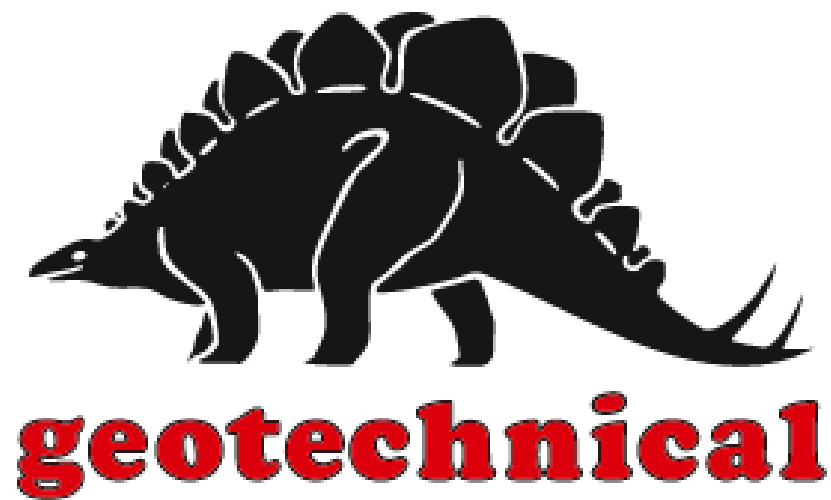
Today's policing is becoming increasingly complex and challenging. It's a job that requires great communication skills, sensitivity and resilience. It also requires courage, initiative and a willingness to learn new skills and new ways of thinking. As a police officer for Gloucestershire Constabulary, you could keep the county safe from the muggers, the gangs and organised crime. Safe from robbery, child abuse and domestic abuse. Safe from complex hidden threats like cybercrime and online radicalisation, modern slavery, stalking, online bullying and grooming. It's a tough job. It means fresh challenges every day. You might be dealing with life, death and everything in between.

Police Constable Degree Apprenticeship (PCDA)

As a minimum you must hold a:

- Level 2 qualification in English and Maths. This can be proved by having GCSEs graded A* to C / 9 to 4 or an equivalent, such as Level 2 Functional Skills.
- Level 3 qualification. This can be proved by having two A Levels, or equivalent qualification, in any subject.





Level 3 Science Technician Apprenticeship

As a Site Technician Apprentice, you'll get paid to explore the outdoors! This hands-on role takes you across the UK where you'll be testing water, gas and soil at different sites – like old industrial land, roads, railways and airports. This apprenticeship offers an exciting step into a long-term career within Earth Sciences! Full training is provided – just bring your curiosity and a willingness to get stuck in! After completion, there may be the opportunity to progress onto their Level 6 Materials Science Apprenticeship.

- Open to age 18+ with UK driving license
- Based in Gloucester
- £20,500 starting salary



[Materials Technician Apprentice \(Level 3\) - Geotechnical Engineering Ltd - Gloucester | Tiro Careers](#)



Level 6 Electromechanical Apprenticeship

Early Careers

As a global company of over 6,000 dedicated people providing technological and scientific expertise, we are excited to recruit the most talented and enthusiastic young people to become key parts of our business. Our Early Careers programmes give you the opportunity to be at the heart of impactful projects. With a dedicated career pathways framework and a focused professional development process, we are committed to supporting our employees to continuously develop, grow their skills and enhance their career opportunities.

Our teams are critical to providing Directed Energy Weapons (DEW) and associated technologies that will provide the military with tools that enhance defensive and offensive capabilities, and you will be joining QinetiQ at a time when there is global interest and budgets to provide viable capability.

- Based in Malvern
- Requirements: 3 x A-levels at AAA (144 UCAS points) incl. Maths + Science

[Level 6 Electromechanical Apprenticeship – Early Careers 2025 Job Details | QinetiQ](#)



G-TEM

Apprenticeships Available:

- Technical Engineer Degree Apprenticeship (Level 6)
- Quality Engineer Degree Apprenticeship (Level 6)
- Engineer Degree Apprenticeship (Level 6)

Interested?

Apply online via our website:
<https://g-tem.co.uk/early-careers/>



<https://g-tem.co.uk/early-careers/>

Engineering Apprenticeships in Gloucester

Start your engineering career today.

Manufacturing Engineer Degree Apprenticeship

Engineers aren't born.
They're made.

Are you **passionate about engineering** and want to pursue a rewarding career in the automotive industry?

Learn fundamental and advanced engineering knowledge and manufacturing principles, working alongside experienced engineers and mentors within our high-tech production facilities.

You will graduate with a **BEng(Hons) Mechanical Engineering with Manufacturing** degree from the University of the West of England (**UWE**).





Vistry Group

Could you be our next

Design & Technical Trainee

What is a Design & Technical Trainee?

As a Design and Technical Trainee you will provide administrative support to the technical team in the planning, co-ordination and design functions on each allocated project from tender to post contract. In this position, you will be working on real projects gaining hands-on experience while working towards a higher Level 4 apprenticeship to further develop your skills and knowledge.



Benefits at Vistry



28 days holiday plus bank holidays



Employee pension scheme



Paid volunteering Days

Find out more about the variety of career pathways available with Vistry Group. Apprenticeships are available for application now.



Vistry Group

Could you be our next

Commercial Trainee

What is a Commercial Trainee?

The Level 4 Quantity Surveying Technician Apprenticeship is a hands-on experience gaining valuable insight and learning. As a Commercial Trainee, you'll support projects by ensuring health and safety compliance, applying sustainability principles, and assisting with contractor selection and contracts. You'll help with project costing, financial reporting, and data analysis to aid decision-making and efficiency.



Benefits at Vistry



28 days holiday plus bank holidays



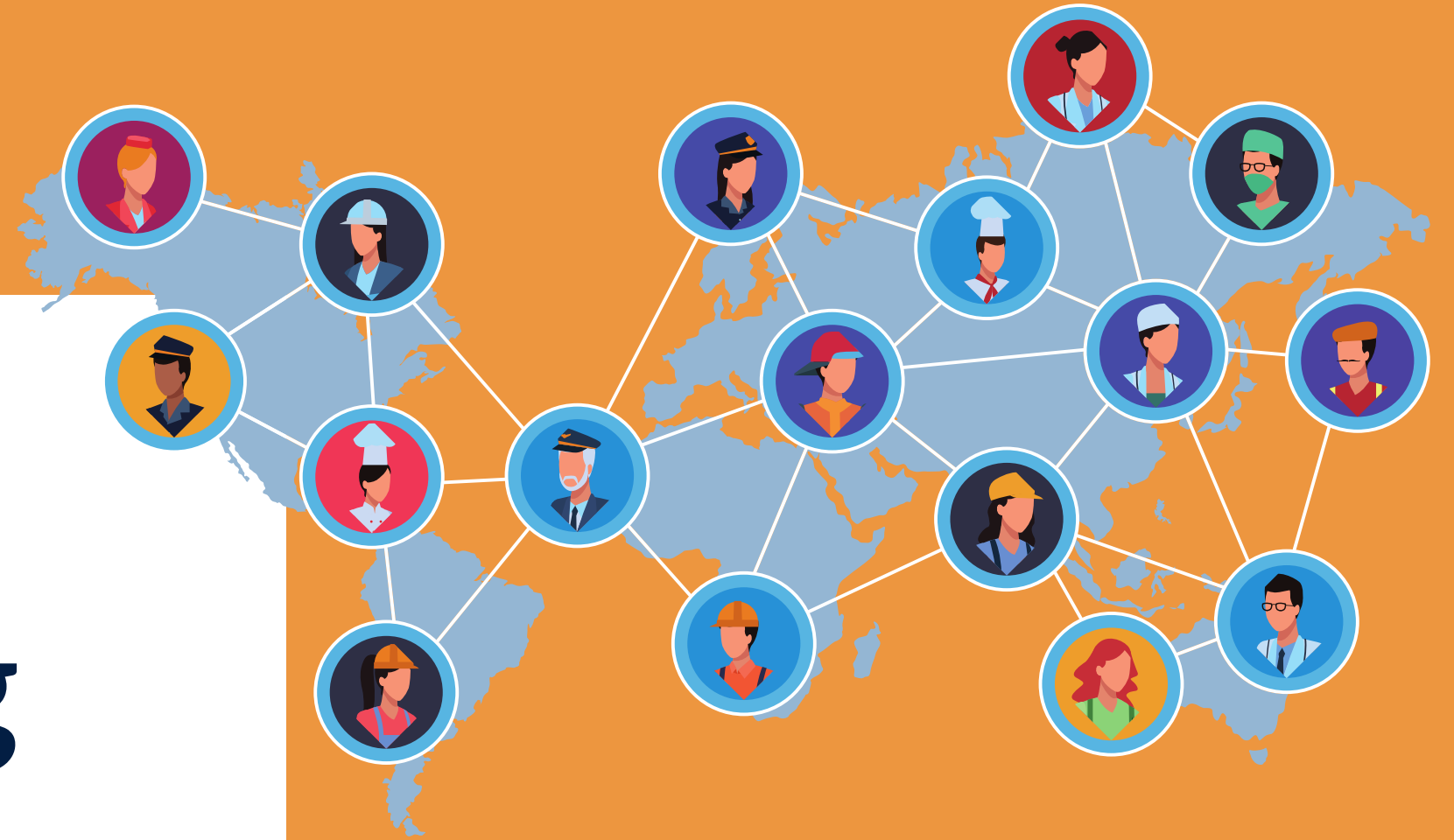
Employee pension scheme



Paid volunteering Days

Careers and work-related learning

Work experience opportunities





CHELTENHAM BOURNSIDE SCHOOL

Work experience opportunity

Events Management Assistants x 2

The Careers Team are looking for 2 x Year 12 students to help support their events during activities week. These include:

2 x 1-day All year group events

1 x Sports day 'Ice cream pavilion' set-up and operation



If you do not have any work experience secured and are interested in this **fantastic** opportunity, please see a member of the careers team.



CHELTENHAM
BOURNSIDE
SCHOOL

Work experience opportunities

Work experience & Volunteering opportunities

Volunteer Activity Assistant

Millbrook Lodge, Brockworth
Grevill House, Charlton Kings
Monkscroft Care Centre, Shelley Road
Windsor Street, Cheltenham

Volunteer Arts & Crafts Assistant

Grevill House, Charlton Kings

Volunteer Music & Singing Assistant

Grevill House, Charlton Kings

Work Experience

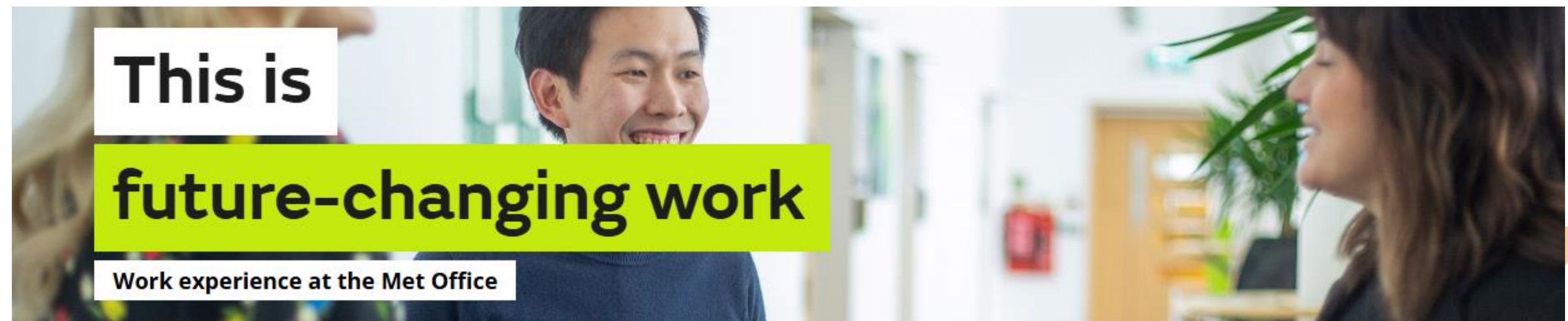
Monkscroft Care Centre, Shelley Road

[Volunteering Opportunities | The Orders of St John Care Trust Volunteering](#)





Met Office



In-person work experience at Met Office HQ in Exeter, Devon. Different streams to apply for, see below. All take place during the week of 14th – 18th July 2025.

Software Development Team



Product Management Team



Finance Team



Project and Programme Management Team



Corporate Technology Teams



National Climate Information Centre (NCIC)



Am I eligible to apply?

To apply for in-person work experience, you must have completed 'Forecasting Your Future', the Met Office online work experience programme. You'll also be in one of the following academic year groups at the time of the placement:

England and Wales. Years 10, 11, 12 or 13 (up to 31st August)

[Work Experience at the Met Office. Exeter, UK and beyond.](#)

[Met Office Careers - Forecasting Your Future | Springpod](#)



Work experience opportunities



Work Insights Programme



Aon's Work Insight Programme, Bristol

Aon are excited to be offering Year 12 and 13 students (16-19 years old) the opportunity to spend 3 days in person participating in Aon's Work Insight Programme.

You are invited to participate in a structured three-day interactive learning and engagement programme designed to provide insights into global business, Aon, and potential career paths for your future.

- 2nd – 4th July 2025
- Travel expenses and lunch provided

[Aon Bristol Work Insight Programme](#)



Morgan Stanley

STUDENTS & GRADUATES

2025 Morgan Stanley Early Insight Summer Programmes



Our **Morgan Stanley Early Insight Programmes** for Year 11, 12 and 13 Students are now Live! Join us this Summer to discover what it is like to work at Morgan Stanley and gain an insight into future opportunities available to you:

[Step In, Step Up: Women's Insight to Banking](#)

- Two-day insight programme for Year 12 & 13 students
- Dates: 28th & 29th July 2025

[Step In, Step Up: An Insight to Banking](#)

- One-day insight programme for Year 12 & 13 students
- Dates: 30th July 2025

[Step In, Step Up: Women in STEM \(Science, Technology, Engineering & Mathematics\)](#)

- Two-day insight programme for Year 13 students who are looking to learn about STEM & Technology opportunities at Morgan Stanley
- Dates: 31st July & 1st August 2025

[Step In, Step Up: Foundations in Finance](#)

- Four-day insight programme for Year 13 students who are starting university in Autumn 2025 and have an interest in the industry and/or STEM opportunities
- Dates: 26th - 29th August 2025

All take place in-person at Morgan Stanley Offices, Canary Wharf, London



Bristol: Arm, Technology Work Experience Day

Fri 9th May 2025 @ 10:00 AM

Arm is one of the UK's leading tech companies. Haven't heard of Arm before? If you have a smartphone, digital camera, digital TV, gaming console or a smart meter at home, you've already used an Arm powered product. Arm technology can be found everywhere.

This event is for students aged 16-21 interested in a career in Tech. Arm have various opportunities in Engineering (software, hardware) as well as Electronics. But if you also have a general curiosity in Arm they also have people who work in Marketing, Business and other non-technical areas.

[Bristol: Arm, Technology Work Experience Day | Event at Uptree](#)



Work experience opportunities

Webbs



Webbs Garden Centre, Cheltenham can offer work experience placements to students. They offer various departments you can be based in:

- Replenishment
- Merchandising
- Café/restaurant
- Office-based

If you are interested, pop into the careers department and we can contact them for you.





GP WORK EXPERIENCE

School and college pupils aged 16+ who are interested in studying medicine can find top tips for obtaining GP work experience and how to make the most of a work experience placement in general practice.

Observe GP

Observe GP is an online alternative to work experience for aspiring medics aged 16 and over, who are living in the UK. It is a free interactive video platform providing insights into the role of a GP and the wider primary care team.

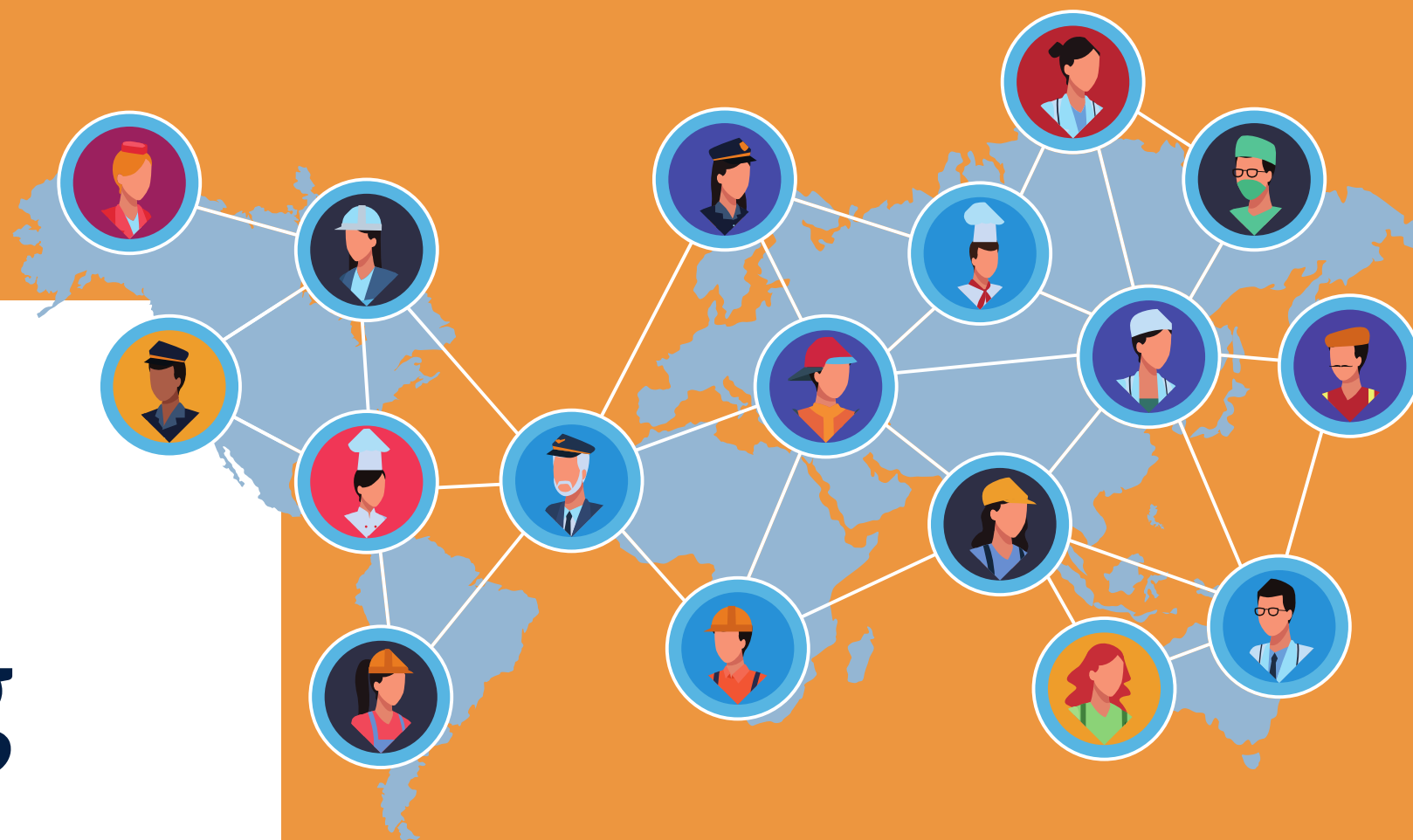
Visit [webpage](#) to register and find out more



[GP work experience](#)

Careers and work-related learning

Careers and university events





UK University Search are excited to be collaborating with the Russell Group once again to bring you our popular, informative and inspiring webinars that cover a range of key topics.

Day 1 - 29th April

An Introduction to the Russell Group and Why Choose to Study There? 12:00 to 13:30

Student life at University 16:30 - 18:00

Day 2 - 30th April

Considering clinical and health professions 9:00 to 10:30

Day 3 - 1st May

Researching University Options 12:00 to 13:30

Personal Statements and Applying to a Russell Group University 16:30 to 18:00

[UK University Search Fair Russell Group Webinars | UK University Search](#)

Russell Group Webinars Fair

Tuesday 29th April 2025 - Thursday 01st May 2025

29th April - 1st May 2025

Meet the
RUSSELL GROUP

Afternoon Session: 12:00 - 13:30

Evening Session: 16:30 - 18:00

www.ukuniversitysearch.com/fair-signup/russell-group-webinars

Logos of Russell Group universities: Manchester, University of Cambridge, University of Liverpool, University of Nottingham, Durham University, King's College London, University of Leeds, UCL, University of Birmingham, Cardiff University, University of Exeter, University of Glasgow, Newcastle University, University of Sheffield, University of Southampton, University of Bristol, Queen Mary University of London, LSE.



Careers and university events

Outreach events 2025



Film, Media Production, Journalism, Sports Journalism or Drama

Wednesday 14th May 9.45am – 2.30pm

<https://r1.dotdigital-pages.com/p/2SCX-KDK/screen-school-may-taster-day-2025>



How to Succeed in the Creative Industries

Meet and network with our media industry guest speakers which in the past have included representatives from ITV, BBC Radio Merseyside, Liverpool Film Office and Lime Studios.

Tuesday 24th June 9.30am – 2.30pm

<https://www.ljmu.ac.uk/Forms/EventWeb/?eventid=CMP-17322-F3L5Y>



[English Taster Day](#) – Tuesday 3rd June

[History Taster Day](#) – Tuesday 17th June

[Criminal Justice Taster Day](#) – Thursday 12th June





Gloucestershire Social Care are delighted to be hosting their 'Spring into Social Care' event for the second year running.

We would love for you to join us if you would like to:

- **Network with Professionals:** Connect with fellow social work and social care professionals in a relaxed informal setting.
- **Kickstart Your Career:** Discover how you can begin your journey in social care.
- **Career Development:** Learn about exciting career development opportunities.

There will be coffee and cake available and a chance to connect with likeminded people.

[Spring into Social Care 2025 Tickets, Wed, May 14, 2025 at 9:00 AM | Eventbrite](#)

**Gloucestershire's
Spring into Social
Care Event 2025**

Wednesday 14 May 2025
9am-11am

SCAN TO
SIGN UP

We would love for you to join us if you would like to:

- ✓ Network with Professionals
- ✓ Kickstart Your Career Development

www.gloucestershire.gov.uk/ascrecruitment
www.gloucestershire.gov.uk/childrens-social-work-jobs/apply-now

 Children's
Social Care
Careers

 #Make the
Difference
Adult Social Care

 **Join Gloucestershire
County Council.**
Social Care Services



Careers and university events



Gloucestershire Health and Care

NHS Foundation Trust

The NHS Gloucestershire Health & Care trust are unable to take on anymore work experience placements for 2025. In place of this, they have organised some live 'Ask the professionals' online webinars over the next few months.

- Hosted by a member of the Apprenticeship team
- Listen to and engage with health care professionals from a wide range of professions
- Hear about various career journeys and pathways into the area of health care you are interested in.



Adult Nursing
Wednesday 4th of June at 3.30pm -
[Click to book](#)
Wednesday 10th September at 3.30 pm -
[Click here to book](#)

Mental Health and Learning Disability Nursing
Wednesday 2nd July at 3:30pm -
[Click here to book](#)
Wednesday 24th September at 3:30pm -
[Click here to book](#)

Physiotherapy and Occupational Therapy
Wednesday 16th July at 3:30pm -
[Click here to book](#)
Wednesday 15th October at 3:30pm -
[Click here to book](#)

Speech and Language Dates
Wednesday 18th June at 3:30pm -
[Click here to book](#)
Wednesday 17th September at 3:30pm -
[Click here to book](#)

[Meet The Professional - Adult Nursing Tickets, Wed, Jun 4, 2025 at 3:30 PM | Eventbrite](#)

MEET THE PROFESSIONAL

**NHS SPEECH & LANGUAGE THERAPY
Q&A WEBINAR**

MEET THE PROFESSIONAL

**NHS MENTAL HEALTH & LEARNING
DISABILITY NURSING
Q&A WEBINAR**

MEET THE PROFESSIONAL

**NHS ADULT NURSING
Q&A WEBINAR**

working together | always improving | respectful and kind | making a difference

University Open Days

 UWE Bristol University of the West of England	7 th June 2025	Undergraduate On Campus Open Day UWE Bristol
 UNIVERSITY of WORCESTER	22 nd June 2025	Book on to an Open Day - University Of Worcester
 University of Exeter	30 th & 31 st May 2025	Open Days and visiting Undergraduate Study University of Exeter
 WARWICK THE UNIVERSITY OF WARWICK	14 th & 21 st June 2025	Undergraduate Open Days at the University of Warwick

Pop into the Careers hub if you have any questions about these events/opportunities

